



## COMMONWEALTH of VIRGINIA

### Department of Workforce Development and Advancement

**Carrie Roth**  
Director

6606 W. Broad Street  
Richmond, VA 23230

**For Release:** Thursday, April 18, 2024

**Contact:** Virginia Works  
Economic Information & Analytics Division  
(804)786-7496

Follow us on Twitter X: [@VirginiaLMI](https://twitter.com/VirginiaLMI).

### **Virginia's Latest Unemployment Insurance Weekly Initial Claims at 2,238; Continued Claims at 15,263**

**RICHMOND**— Virginia Works announced today that 2,238 unemployment insurance weekly **initial claims** were filed during the week ending April 13, 2024, which is 2.2 percent lower than last week's 2,288 claims and 27.2 percent higher than the comparable week of last year (1,760). Nearly 82 percent of claimants self-reported an associated industry; of those reported, the top five industries (61 percent) were Administrative and Support and Waste Management (257); Professional, Scientific, and Technical Services (249); Retail Trade (203); Health Care and Social Assistance (182); and Manufacturing (171).

**Continued weeks claims** (15,263) were 0.6 percent lower than last week (15,351) and were 30.8 percent higher than the comparable week of last year (11,672). Nearly 93 percent of claimants self-reported an associated industry; of those reported, the top five industries (58 percent) were Professional, Scientific, and Technical Services (2,276); Administrative and Support and Waste Management (2,102); Health Care and Social Assistance (1,337); Manufacturing (1,329); and Retail Trade (1,199).

**Significant Layoffs and Announcements are available at the following websites:**

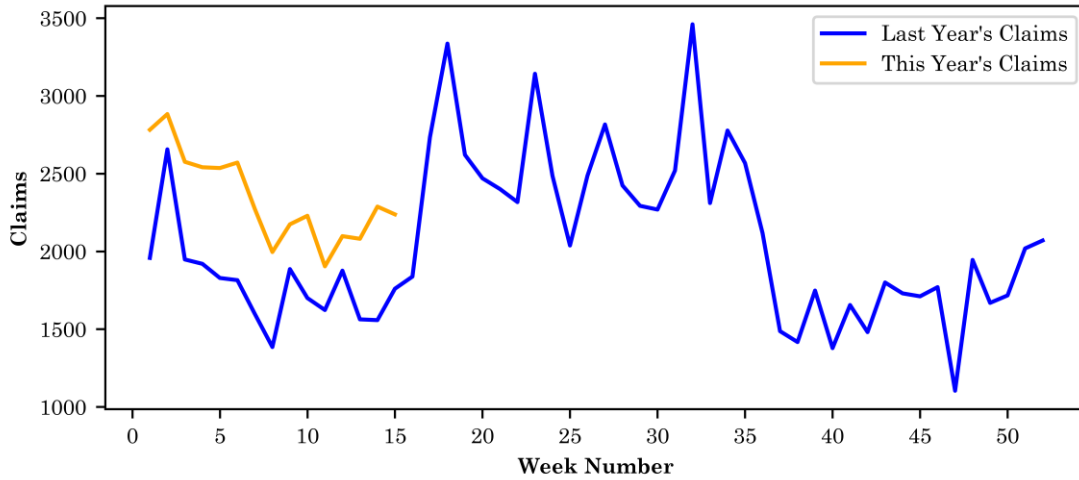
[WARN Notices | Virginia Employment Commission](#)

[Announcements | Virginia Economic Development Partnership](#)

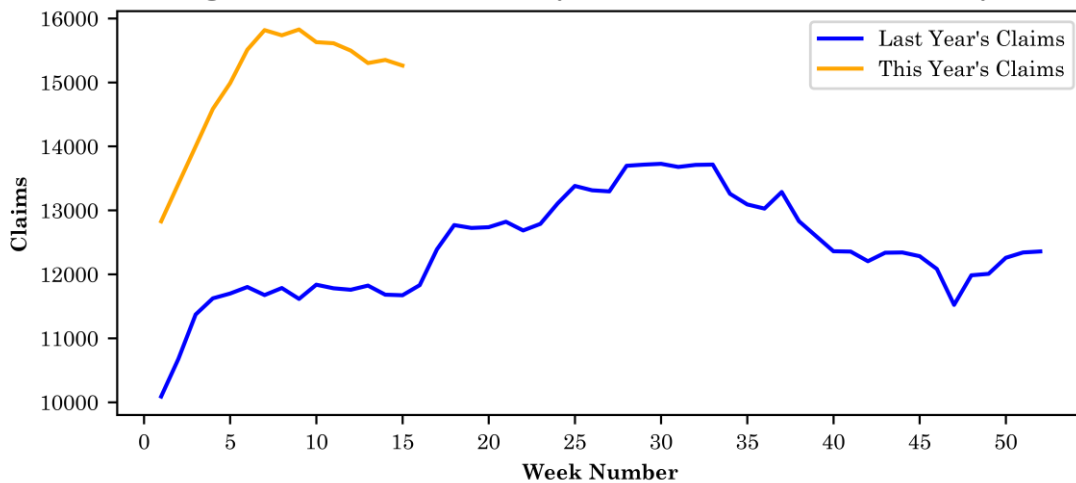
**Initial Claims – Comparison of Unemployment Insurance Activity**

	Week Ending 04/13/2024	Week Ending 04/06/2024	Week Ending 03/30/2024	Last Year 04/15/2023
Initial Claims	2,238	2,288	2,081	1,760
Initial Change (%)	-50 (-2.2%)	+207 (+9.9%)	-17 (-0.8%)	+478 (+27.2%)
Continued Claims	15,263	15,351	15,302	11,672

**Virginia Initial Claims by Week: Previous and Current year**



**Virginia Continued Claims by Week: Previous and Current year**





### Initial Claims for All States

In the week ending April 13, the advance figure for seasonally adjusted initial claims was 212,000, unchanged from the previous week's revised level. The previous week's level was revised up by 1,000 from 211,000 to 212,000. The advance number of actual initial claims under state programs, unadjusted, totaled 208,509 in the week ending April 13, a decrease of 6,756 (or 3.1 percent) from the previous week. The seasonal factors had expected a decrease of 6,369 (or 3.0 percent) from the previous week. There were 216,740 initial claims in the comparable week in 2023.

<b>Initial State Claims (5 largest decreases)</b> (Not Seasonally Adjusted)			
<b>State</b>	<b>Initial Claims (this week)</b>	<b>Initial Claims (prior week)</b>	<b>Change</b>
New Jersey	9,405	13,956	-4,551
Wisconsin	4,629	6,427	-1,798
Pennsylvania	11,547	13,194	-1,647
Illinois	7,951	9,491	-1,540
Ohio	4,444	5,698	-1,254

<b>Initial State Claims (5 largest increases)</b> (Not Seasonally Adjusted)			
<b>State</b>	<b>Initial Claims (this week)</b>	<b>Initial Claims (prior week)</b>	<b>Change</b>
California	45,469	42,406	3,063
Oregon	7,168	5,404	1,764
Connecticut	4,589	2,937	1,652
Georgia	5,669	4,448	1,221
New York	17,184	16,588	596

# All States Initial Weeks Claimed

