



## COMMONWEALTH of VIRGINIA

### Department of Workforce Development and Advancement

**Carrie Roth**  
Director

6606 W. Broad Street  
Richmond, VA 23230

**For Release:** Thursday, April 11, 2024

**Contact:** Virginia Works  
Economic Information & Analytics Division  
(804)786-7496

Follow us on Twitter X: [@VirginiaLMI](https://twitter.com/VirginiaLMI).

### **Virginia's Latest Unemployment Insurance Weekly Initial Claims at 2,288; Continued Claims at 15,351**

**RICHMOND**— Virginia Works announced today that 2,288 unemployment insurance weekly **initial claims** were filed during the week ending April 06, 2024, which is 9.9 percent higher than last week's 2,081 claims and 46.9 percent higher than the comparable week of last year (1,558). Nearly 78 percent of claimants self-reported an associated industry; of those reported, the top five industries (61 percent) were Administrative and Support and Waste Management (260); Professional, Scientific, and Technical Services (260); Retail Trade (207); Manufacturing (176); and Health Care and Social Assistance (166).

**Continued weeks claims** (15,351) were 0.3 percent higher than last week (15,302) and were 31.4 percent higher than the comparable week of last year (11,681). Nearly 93 percent of claimants self-reported an associated industry; of those reported, the top five industries (57 percent) were Professional, Scientific, and Technical Services (2,242); Administrative and Support and Waste Management (2,078); Health Care and Social Assistance (1,354); Manufacturing (1,293); and Retail Trade (1,169).

**Significant Layoffs and Announcements are available at the following websites:**

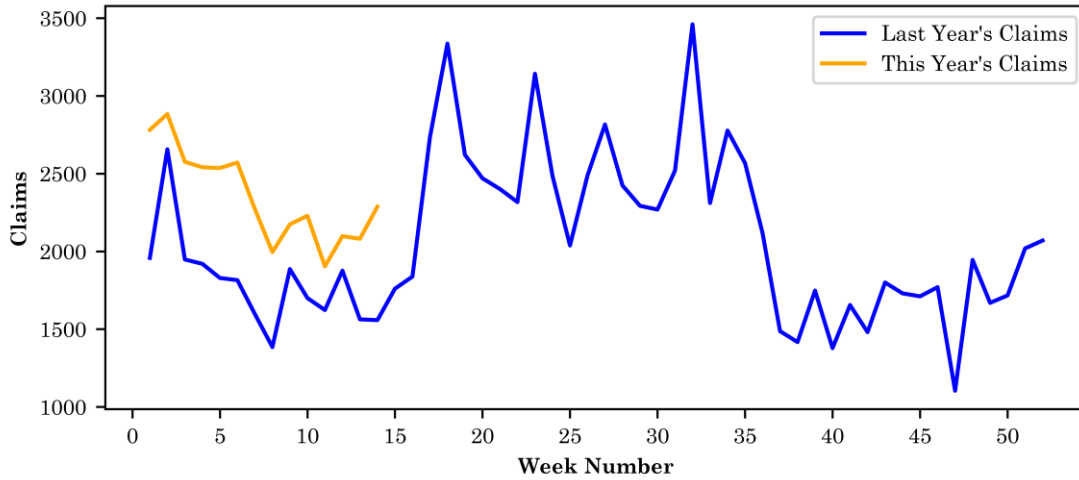
[WARN Notices | Virginia Employment Commission](#)

[Announcements | Virginia Economic Development Partnership](#)

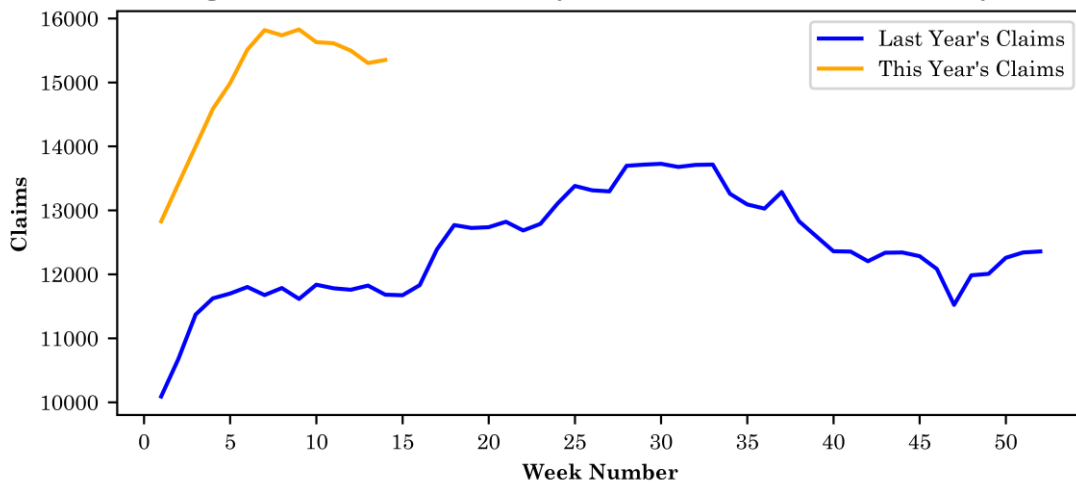
### Initial Claims – Comparison of Unemployment Insurance Activity

	Week Ending 04/06/2024	Week Ending 03/30/2024	Week Ending 03/23/2024	Last Year 04/08/2023
Initial Claims	2,288	2,081	2,098	1,558
Initial Change (%)	+207 (+9.9%)	-17 (-0.8%)	+194 (+10.2%)	+730 (+46.9%)
Continued Claims	15,351	15,302	15,497	11,681

**Virginia Initial Claims by Week: Previous and Current year**



**Virginia Continued Claims by Week: Previous and Current year**





### Initial Claims for All States

In the week ending April 6, the advance figure for seasonally adjusted initial claims was 211,000, a decrease of 11,000 from the previous week's revised level. The previous week's level was revised up by 1,000 from 221,000 to 222,000. The advance number of actual initial claims under state programs, unadjusted, totaled 214,386 in the week ending April 6, an increase of 17,037 (or 8.6 percent) from the previous week. The seasonal factors had expected an increase of 27,749 (or 14.1 percent) from the previous week. There were 223,382 initial claims in the comparable week in 2023.

<b>Initial State Claims (5 largest decreases)</b> (Not Seasonally Adjusted)			
State	Initial Claims (this week)	Initial Claims (prior week)	Change
Iowa	1,571	2,910	-1,339
Maryland	2,594	3,313	-719
Ohio	5,618	6,228	-610
Nevada	1,800	2,214	-414
Missouri	2,718	3,082	-364

<b>Initial State Claims (5 largest increases)</b> (Not Seasonally Adjusted)			
State	Initial Claims (this week)	Initial Claims (prior week)	Change
New Jersey	13,807	9,617	4,190
New York	16,701	14,089	2,612
Pennsylvania	13,150	11,411	1,739
Texas	15,191	13,796	1,395
Oregon	5,870	4,547	1,323

# All States Initial Weeks Claimed

